

# MAGIC 2024



# MAGIC

## EXPORT DIVISION



ARTE & D. S.R.L.  
[www.arte-d.it](http://www.arte-d.it)  
[info@arte-d.it](mailto:info@arte-d.it)  
T. +39 0429 782200

## DIVISIONE ITALIA



ELLECI OFFICE S.R.L.  
[www.ellecioffice.it](http://www.ellecioffice.it)  
[info@ellecioffice.it](mailto:info@ellecioffice.it)  
T. +39 0429 784599

## Seating Solutions made in Italy since 1976 / Seating Solutions made in Italy since 1976

L'Azienda nasce da una lunga tradizione familiare di produttori di sedute per ufficio, contract e collettività.

Negli anni ha focalizzato l'attenzione sulla qualità, sul design e sul servizio, mantenendo una produzione interna che l'ha resa una prestigiosa realtà produttiva italiana del settore.

The company was born from a long family tradition of manufacturers of office, contract and community seating. Over the years it has focused its attention on quality, design and service and, by maintaining an internal production, has become a prestigious Italian leading manufacturer.



## Qualità e sostenibilità ambientale / Quality and environmental sustainability

Siamo certificati **ISO 9001** per ottimizzare i processi aziendali, migliorando l'efficienza della produzione e del servizio offerto. Siamo certificati **ISO 14001**, perché crediamo nell'importanza di mantenere sotto controllo l'impatto ambientale delle nostre attività produttive. Siamo certificati **ISO 45001** per garantire la salute e la sicurezza dei lavoratori, proteggendo le persone che operano in azienda. L'azienda ha inoltre approvato un proprio **Codice Etico** su base volontaria. Abbiamo eseguito test specifici presso

We are **ISO 9001** certified to optimize business processes, improving the efficiency of production and of the service provided. We are **ISO 14001** certified, because we believe in the importance of keeping the environmental impact of our production activities under control. We are **ISO 45001** certified to guarantee the health and safety of workers and to protect the people who work in the company. The company has also approved its own **Code of Ethics** on a voluntary basis.

laboratori autorizzati per garantire la conformità dei prodotti ai Criteri Ambientali Minimi (**CAM**). Ci siamo certificati **FSC®** perché crediamo nell'importanza di una gestione sostenibile delle foreste da un punto di vista ambientale e sociale. Siamo orgogliosi di aver vinto il prestigioso premio **FSC® Italy Furniture Award** che attesta l'operato nel rispetto della sostenibilità ambientale. Cerca i nostri prodotti certificati **FSC®**.

We have performed specific tests in approved laboratories to ensure the compliance of the products to the Minimum Environmental Criteria (**CAM**). We have been **FSC®** certified because we believe in the importance of sustainable forest management from both an environmental and a social point of view. We are proud to have won the prestigious **FSC® Italy Furniture Award** which certifies our work is in compliance with environmental sustainability. Look for our **FSC®** certified products.



## Consulenza tecnica / Technical advice

Come membri del Comitato Tecnico delle normative UNI e soci membri CATAS possiamo fornire ai nostri partner consulenza su aspetti normativi e di certificazione inerenti il mondo dell'ufficio e della collettività.

As members of the Technical Committee of UNI standards and CATAS , we can provide our partners with advice on regulatory and certification aspects related to the office and community world.



## Distribuzione capillare / Distribution

Grazie ad accordi stretti con i più importanti partner logistici, riusciamo a garantire una distribuzione capillare su tutto il territorio nazionale, in Europa e nel Mondo, con una tracciatura del trasporto durante tutto il suo percorso.

We partnered with the most important logistics companies in order to be able to guarantee a widespread distribution throughout the national territory, all over Europe and in the world.



# Indice

## Index

<b>direzionali / executive</b>	<b>09</b>
SELECTA	11
SADIA	15
TRILOGY	19
SKYNET	23
X-NET	27
<b>operative / task chairs</b>	<b>31</b>
TARIFA	33
ALTEA	39
SIERRA	43
JENIA MESH	47
MASHA	49
OXY	51
START	53
TIM	55
<b>attesa e collettività / waiting and community chairs</b>	<b>57</b>
BOX	59
JOLLY	63
TEOREMA	65
KLIC	69
WING	73
KUBIKA	77
ISLA	81
EASY	83
ALEXIA	85
<b>sgabelli / stools</b>	<b>87</b>
PRACTICA	89
<b>appendiabiti / coat stand</b>	
TREE	92
<b>rivestimenti / coverings</b>	<b>95</b>



# direzionali executive

SELECTA	11
SADIA	15
TRILOGY	19
SKYNET	23
X-NET	27



CC30200G AR2

Preziosi / executive

# SELECTA

---

ufficio / office  
sala riunioni / boardroom



C3023V



C30210G



C3023V



CC30200G AR2



CC30300G

direzionali / executive

# SADIA

ufficio / office

sala riunioni / boardroom



C30310G



C3032V



PP30300G AR9



P30310G



P3032V



C49D

direzionali / executive

# TRILOGY

---

ufficio / office  
sala riunioni / boardroom



P48D



C42V



C430G



P48D



CC1200G

direzionali / executive

# SKYNET

---

ufficio / office

sala riunioni / boardroom



C1210G



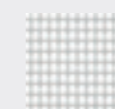
CC1200G



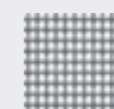
C123V



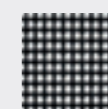
C122V



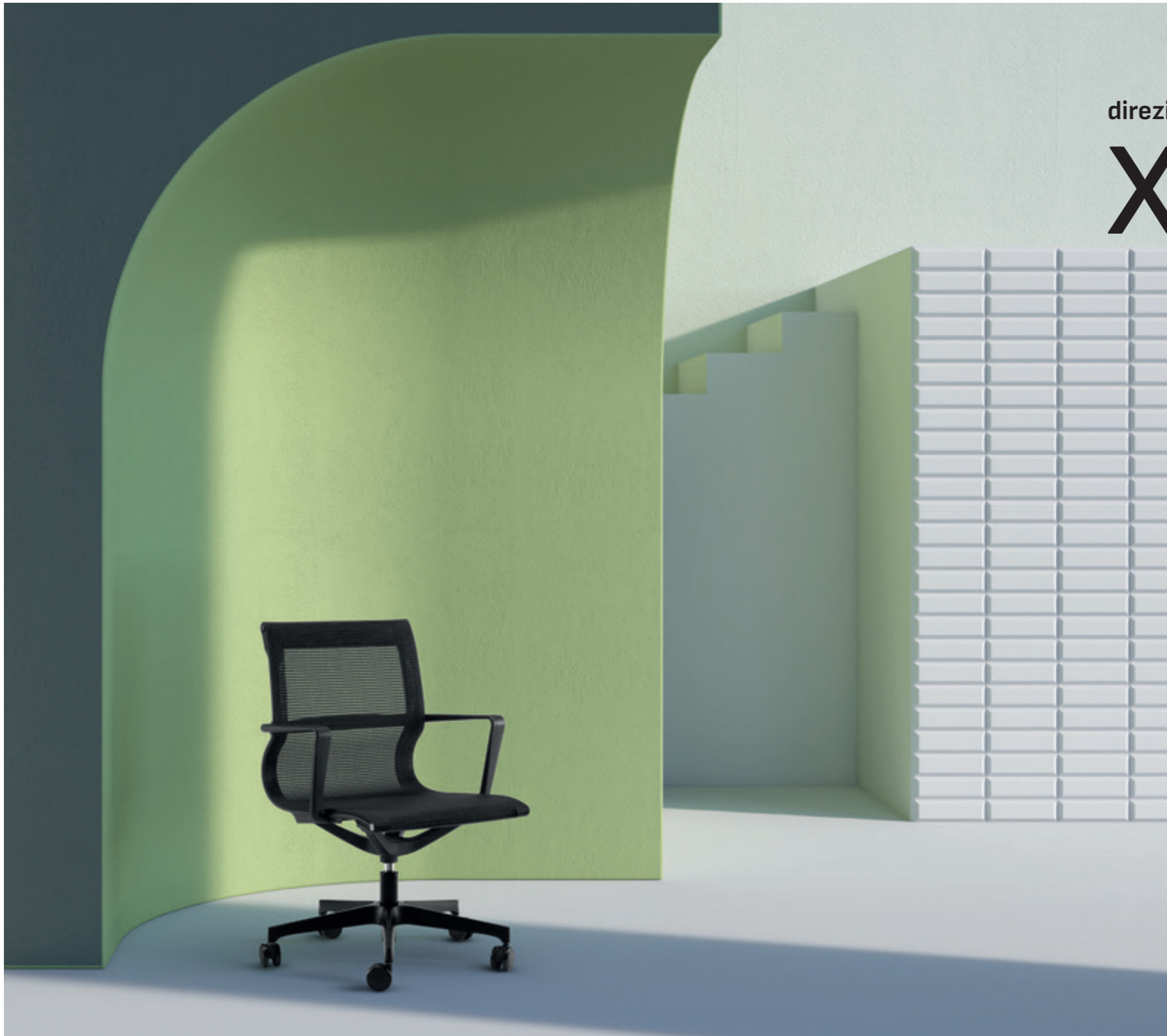
N10



N19



N00



direzionali / executive

# X-NET

---

ufficio / office  
sala riunioni / boardroom



P1300G BR130



P1320G



P1320G BR130



P1300G BR130



P1310G



NK10



NK09



NK00



# operative task chairs

TARIFA	33
ALTEA	39
SIERRA	43
JENIA MESH	47
MASHA	49
OXY	51
START	53
TIM	55



P142DTR BRN144

operative / task chairs

# TARIFA

---

ufficio / office



P140DTR BRN527



B143DTR BRB144

P141DTR BRN144



B142DTR BRB527

B140DTR BRB144



B143D BRB144



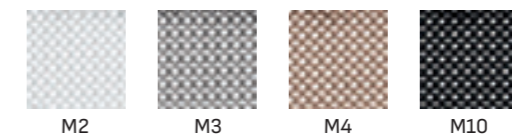
B141D



P140DTR BRN144



P143D



M2

M3

M4

M10



operative / task chairs

# ALTEA

ufficio / office



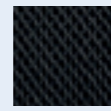
P690DTR BR70



P690DTR BR69



XL09



XL00



P691DTR BR69



P691D

operative / task chairs

# SIERRA

ufficio / office



B150D BRB20



P150D BRN151



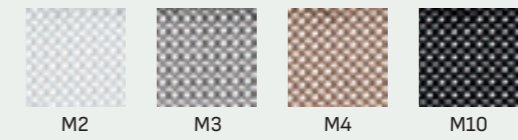
B150D BRB20

B150D



P150D BRN151

P150DTR BRN20



M2

M3

M4

M10

operative / task chairs

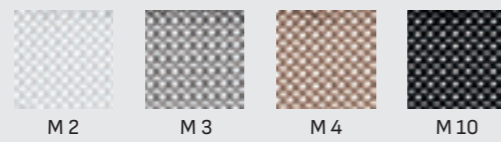
# JENIA MESH



P106D BRROBY GSROBY



P106D



ufficio / office



P106D BR26



P106D BR26

operative / task chairs

# MASHA

ufficio / office



N5010Y BRN20

B5010Y



B5010Y BRB20

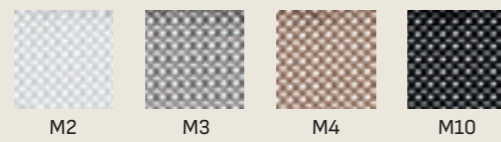
N5010Y BRSON



P96D BRTBL



P95D BRN20



M2

M3

M4

M10

operative / task chairs

# OXY

ufficio / office



P96D BRN20



P96D



P401Y BRJACK



P401Y



P401Y BRN20



P401D BRN20



operative / task chairs

# START

ufficio / office



EP104Y



EP100Y BRGOLF



EP100Y



EP100Y BRN20

operative / task chairs

# TIM

---

ufficio / office

**attesa e collettività**  
 waiting and community chairs



BOX	59
JOLLY	63
TEOREMA	65
KLIC	69
WING	73
KUBIKA	77
ISLA	81
EASY	83
ALEXIA	85



attesa e collettività / waiting and community chairs

# BOX

---

sala attesa / waiting room  
 lounge / lounge  
 ufficio / office  
 casa / home  
 caffetteria / cafeteria




---

C613V



C613V

C612V

C611V



C611V

C612V

# JOLLY

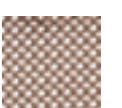
sala attesa / waiting room  
 ufficio / office  
 sala riunioni / boardroom  
 biblioteca / library



M2



M3



M4



M10



XL09



XL00



N6104V

C6104V



N6103V

C6103V



C6091V BRN92

attesa e collettività / waiting and community chairs

# TEOREMA

sala attesa / waiting room  
 ufficio / office  
 sala riunioni / boardroom  
 biblioteca / library



BIANCO  
white



GRIGIO  
grey



NERO  
black



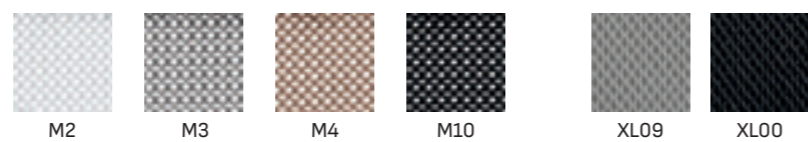
C6096V BR90SX BR91T



C6093V



C6092V BRB92



C6090V BRG92



C6090V



C6094T3



C6098T3



G7087RT

attesa e collettività / waiting and community chairs

# KLIC

- 
- sala attesa / waiting room
  - ufficio / office
  - sala riunioni / boardroom
  - biblioteca / library



G7085R

G7086R



N7087RT



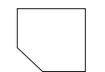
N7086R



attesa e collettività / waiting and community chairs

# WING

- sala attesa / waiting room
- sala conferenza / conference room
- caffetteria / cafeteria
- sala riunioni / boardroom
- biblioteca / library



BIANCO  
white



GRIGIO TORTORA  
dove grey



TIFFANY  
tiffany



NERO  
black



180 B + 181 GT



180 GT + 181 WF



180 B + 181 B



180 N + 181 N



180 GT + 181 GT



180 TF + 181 TF + PS180



B182B



N182B



N183B



B183B



B184G + PS180



N184G



attesa e collettività / waiting and community chairs

# KUBIKA

- sala attesa / waiting room
- sala conferenza / conference room
- caffetteria / cafeteria
- sala riunioni / boardroom
- biblioteca / library



NERO  
black



BIANCO  
white



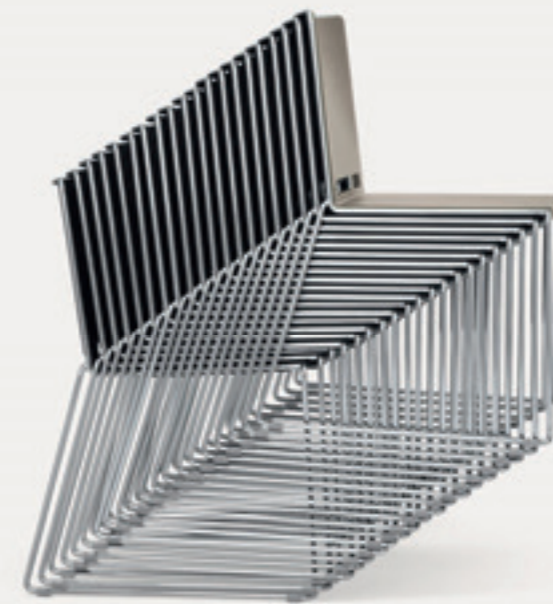
TORTORA  
taupe



C1512V



C1510V





attesa e collettività / waiting and community chairs

# ISLA

esterno / outdoor  
 casa / home  
 caffetteria / cafeteria  
 sala attesa / waiting room

 ANTRACITE  
charcoal

 BIANCO  
white

 VERDE SALVIA  
sage green

 CIPRIA  
powder

 TIFFANY



 BLU  
blue

 GRIGIO  
grey



ISLA



ISLA BR



ISLA



ISLA BR



ISLA R BR



ISLA R



P112



P112 BR05T BR05



W112N



P112NET



N22+TNET



W112C



C112PVC



N23PVC



BR05T



BR05

attesa e collettività / waiting and community chairs

# EASY

- sala conferenza / conference room
- ufficio / office
- sala attesa / waiting room
- biblioteca / library
- sala riunioni / boardroom



NERO  
black



GRIGIO  
grey



ROSSO  
red



BLU  
blue



P112PVC



P112PVC



N7062T3

attesa e collettività / waiting and community chairs

# ALEXIA

sala attesa / waiting room  
sala conferenza / conference room  
biblioteca / library  
caffetteria / cafeteria

BIANCO PERLA  
off white

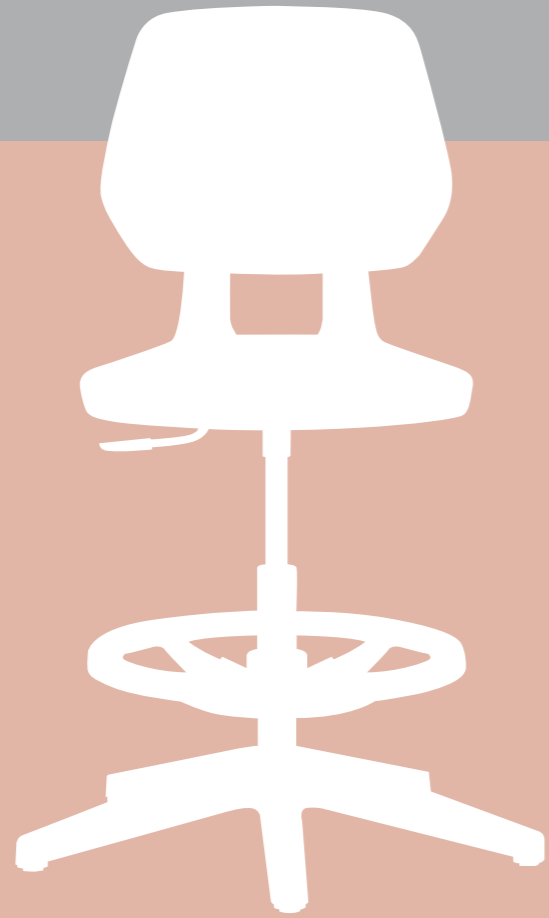
GRIGIO MUSCHIO  
grigio

GIALLO  
yellow

BLU  
blue



C7060V



# sgabelli stools

sgabelli / stools

# PRACTICA

ufficio / office



R070G



B070G



N070G



appendiabiti / coat stand

# TREE

sala attesa / waiting room

ufficio / office

biblioteca / library



AN-TREE



AG-TREE



AC-TREE



# Rivestimenti Coverings

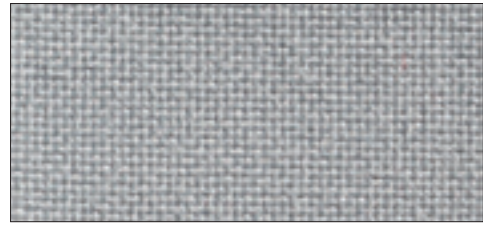
## CATEGORIA 1 MADRID



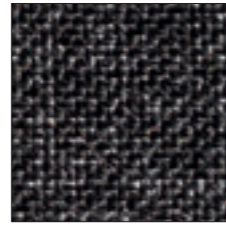
ignifugo classe 1IM  
fire proof class 1IM



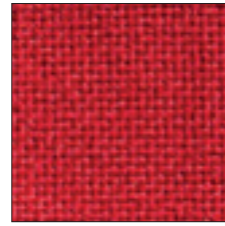
96



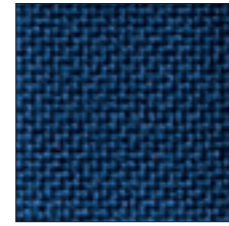
MD515



MD514



MD502



MD510



MD511

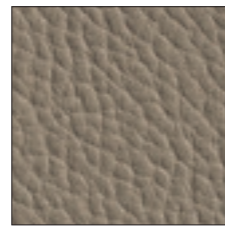
## CATEGORIA 1 COVE



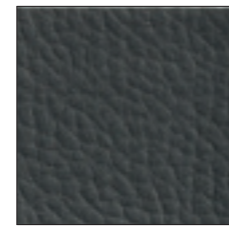
C539



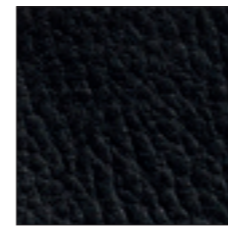
C21



C84



C98



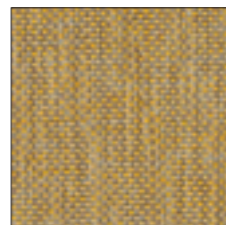
C560

## CATEGORIA 2 ANGEL

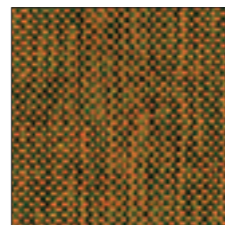
ignifugo classe 1IM  
fire proof class 1IM



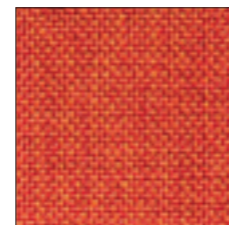
AN38



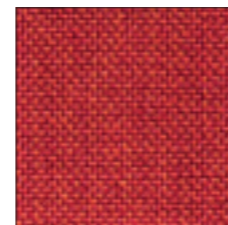
AN46



AN14



AN30



AN35



AN53



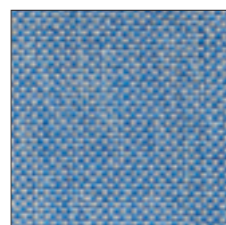
AN50



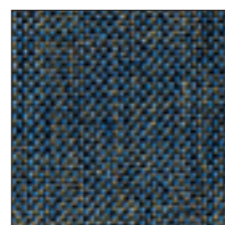
AN45



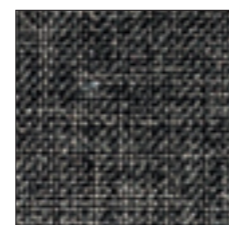
AN20



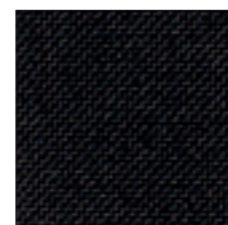
AN55



AN39



AN56



AN57

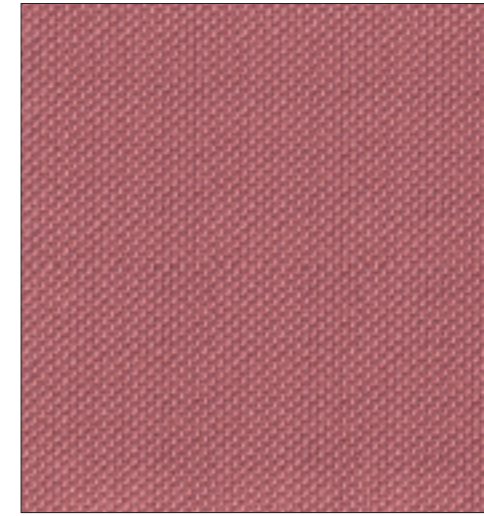
## CATEGORIA 2 ONE



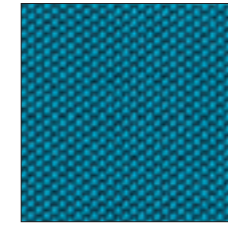
ignifugo classe 1IM  
fire proof class 1IM



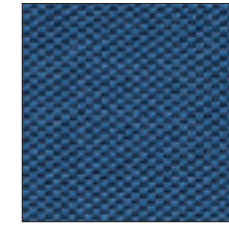
97



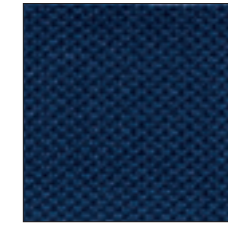
ON4067



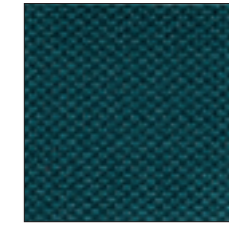
ON6591



ON6512



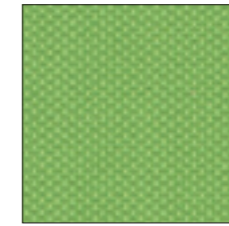
ON6017



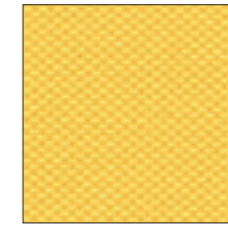
ON7033



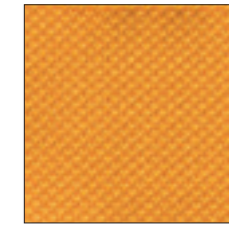
ON7029



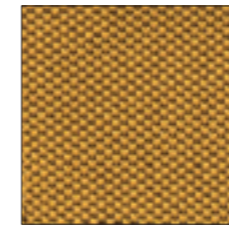
ON7022



ON3007



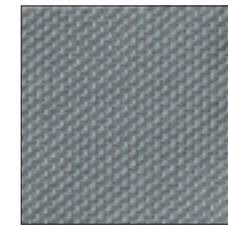
ON3008



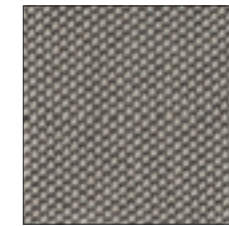
ON3530



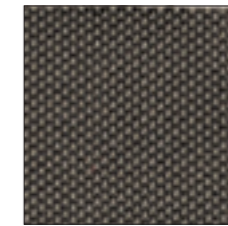
ON4028



ON8032



ON1506



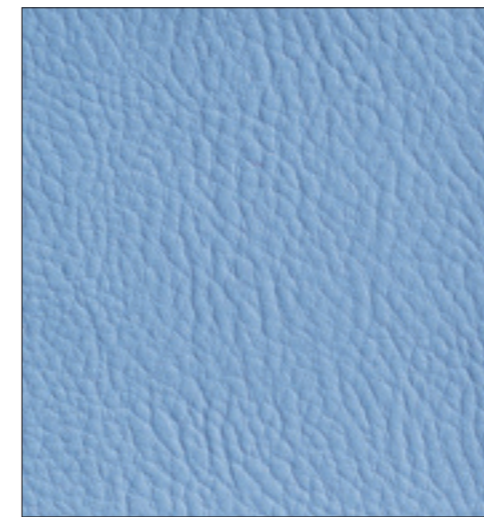
ON2519



ON8033

## CATEGORIA 2 GAZEBO

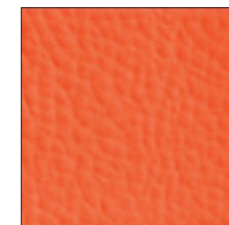
ignifugo classe 1IM  
fire proof class 1IM



S4979



S71



S792



S680



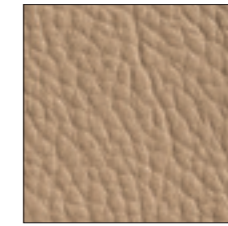
S726



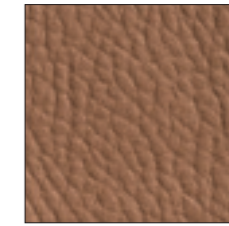
S6



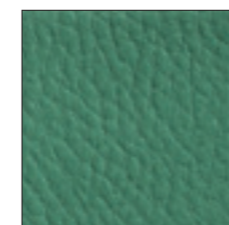
S151



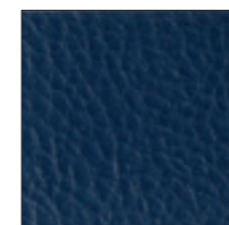
S1194



S1307



S1809



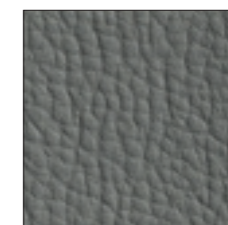
S4947



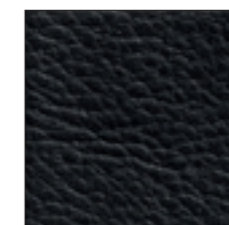
S6985



S4009



S1955



S991

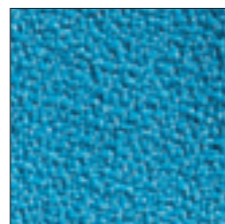
## CATEGORIA 2 KING-FLEX



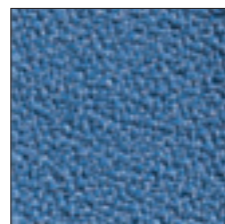
ignifugo classe 1IM  
fire proof class 1IM



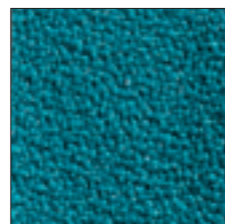
KF1006



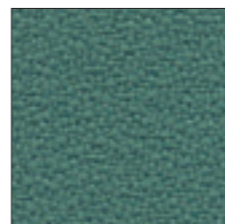
KF6007



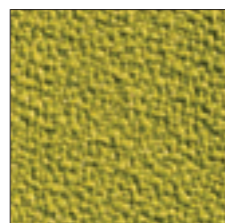
KF6026



KF7023



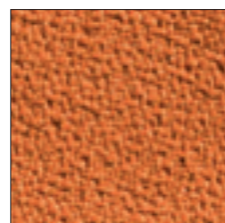
KF7015



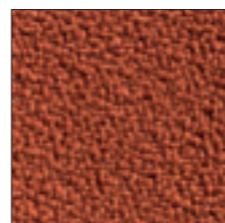
KF3030



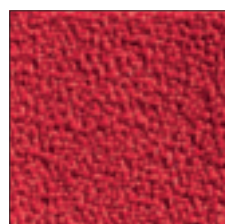
KF3083



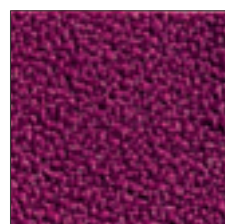
KF4030



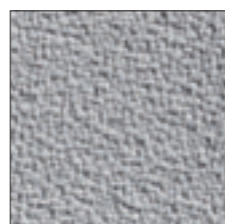
KF4066



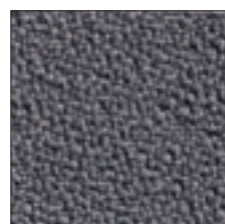
KF4008



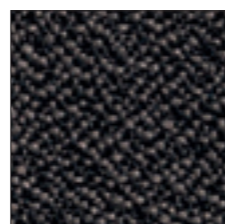
KF4020



KF8027



KF8009



KF9228



KF8033

## SCHEMA TECNICA Technical sheet

### CATEGORIA 1

#### MADRID

± 230 g/mq

100% PP polipropilene F.R. / 100% PP polypropylene F.R.  
80.000 cicli martindale / 80.000 martindale cycles

#### Resistenza al fuoco/Flammability

CLASSE 1 IM - UNI 9175

EN 1021 - 1/2

BS 5852 /2 - CRIB 5

California TB 117

#### COVE

± 565 g/mq

82% PVC - 7% cotone / 11% poliestere

82% PVC - 7% cotton / 11% polyester

50.000 cicli martindale / 50.000 martindale cycles

### CATEGORIA 2

#### ANGEL

± 228 g/mq

100% polipropilene F.R. / 100% polypropylene F.R.

100.000 cicli martindale / 100.000 martindale cycles

#### Resistenza al fuoco/Flammability

CLASSE 1 IM - UNI 9175

EN 1021 - 1/2

BS 5852 /2 - CRIB 5

California TB 117

#### ONE

± 350 g/mq

100% poliestere riciclato / 100% recycled polyester

100.000 cicli martindale / 100.000 martindale cycles

#### Resistenza al fuoco/Flammability

CLASSE 1 IM - UNI 9175

BS 7176

EN 1021 - 1/2

BS 5852 /2 - CRIB 5

California TB 117

#### GAZEBO

± 640 g/mq

87,5% polivinilcloruro plastificato - 12,5% cotone

87,5% plasticized polyvinylchloride - 12,5% cotton

50.000 cicli martindale / 50.000 martindale cycles

#### Resistenza al fuoco/Flammability

CLASSE 1 IM - UNI 9175

BS 7176

EN 1021-1/2

California TB 117

#### KING-FLEX

± 300 g/mq

100% poliestere Trevira CS / 100% polyester Trevira CS

100.000 cicli martindale / 100.000 martindale cycles

#### Resistenza al fuoco/Flammability

CLASSE 1 IM - UNI 9175

BS 7176

EN 1021 - 1/2

BS 5852 /2 - CRIB 5

California TB 117

## **CREDITS**

### **images**

Stefano Adriani

### **colour separation**

Creative Studio srl

### **print**

Grafiche Antiga spa



