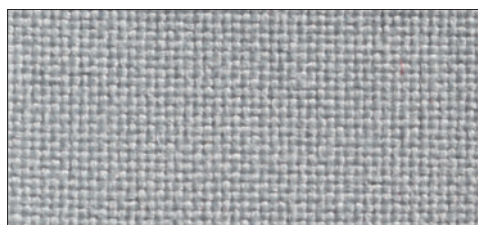


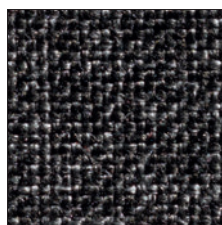
## CATEGORIA 1 MADRID



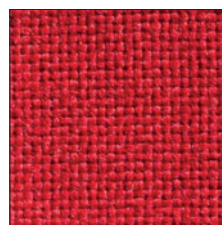
ignifugo classe 1IM  
fire proof class 1IM



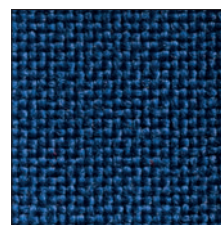
MD 515



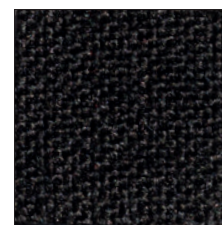
MD 514



MD 502

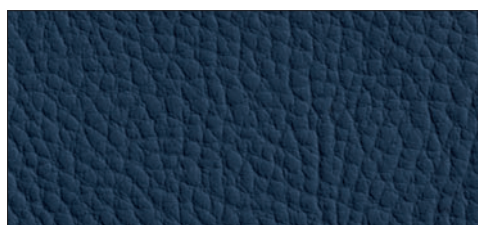


MD 510



MD 511

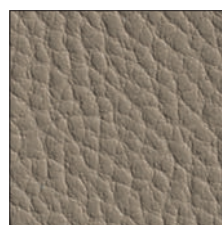
## CATEGORIA 1 COVE



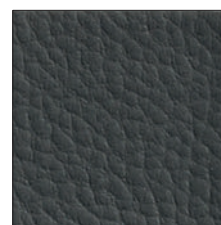
C 539



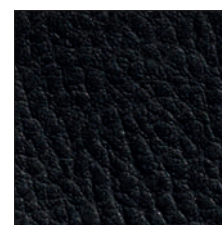
C 21



C 84



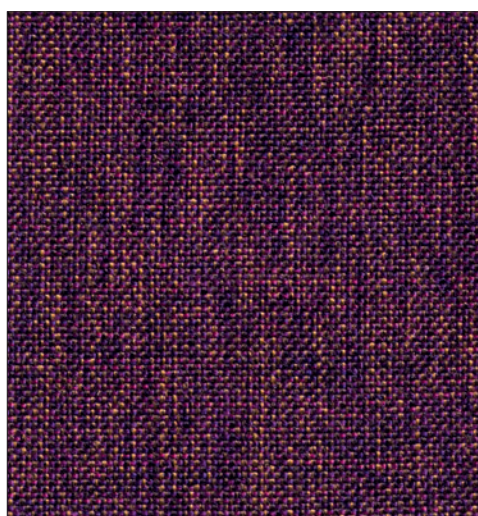
C 98



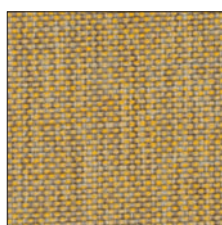
C 560

## CATEGORIA 2 ANGEL

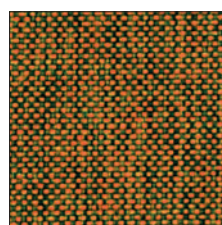
ignifugo classe 1IM  
fire proof class 1IM



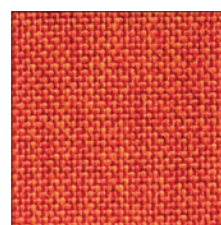
AN 38



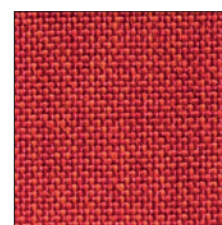
AN 46



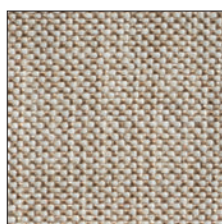
AN 14



AN 30



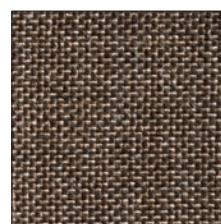
AN 35



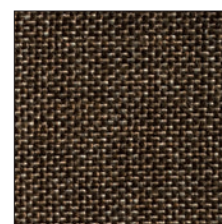
AN 53



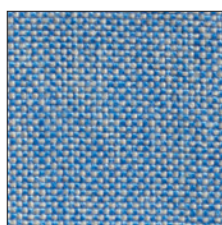
AN 50



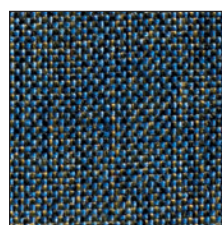
AN 45



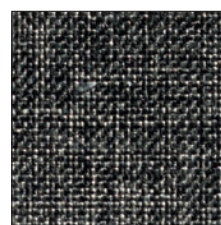
AN 20



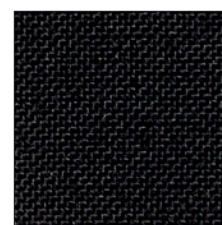
AN 55



AN 39



AN 56

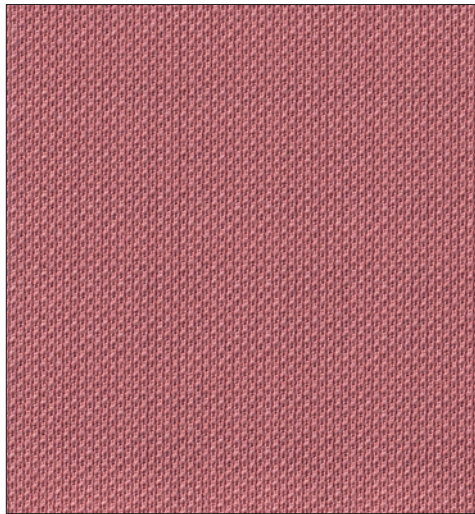


AN 57

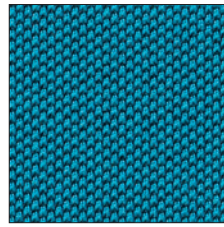
# CATEGORIA 2 ONE



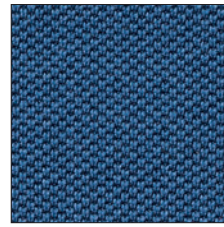
ignifugo classe 1IM  
fire proof class 1IM



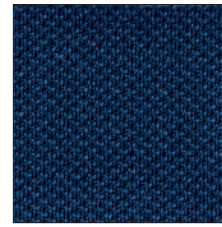
ON4067



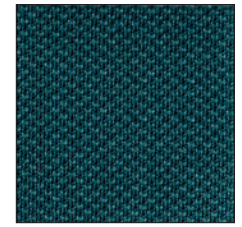
ON6591



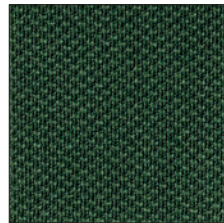
ON6512



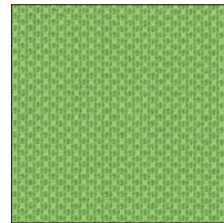
ON6017



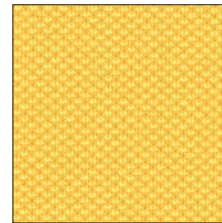
ON7033



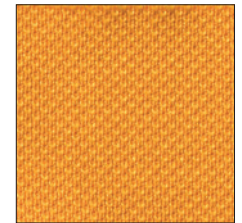
ON7029



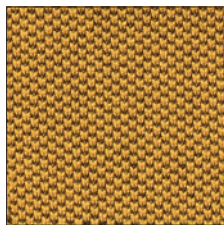
ON7022



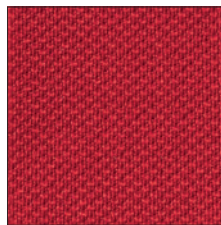
ON3007



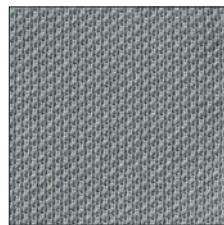
ON3008



ON3530



ON4028



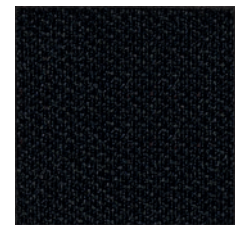
ON8032



ON1506



ON2519



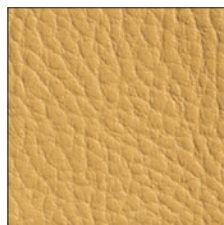
ON8033

# CATEGORIA 2 GAZEBO

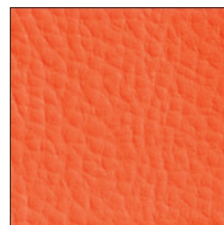
ignifugo classe 1IM  
fire proof class 1IM



S4979



S71



S792



S680



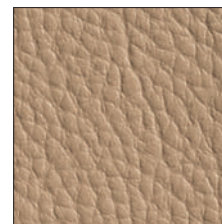
S726



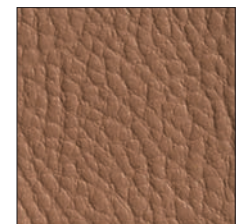
S6



S151



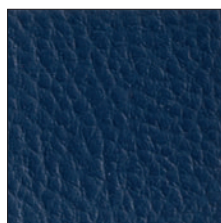
S1194



S1307



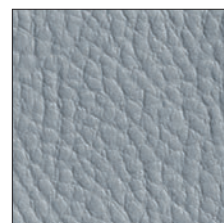
S1809



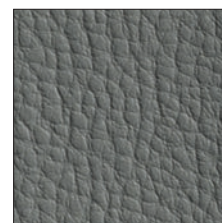
S4947



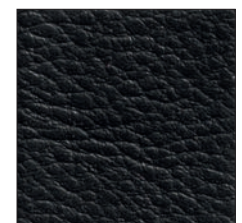
S6985



S4009




S1955



S991

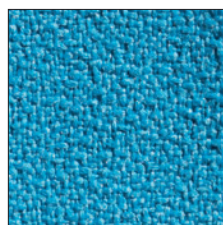
# CATEGORIA 2 KING-FLEX



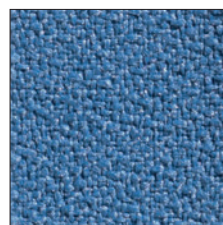
ignifugo classe 1IM  
fire proof class 1IM 



KF1006



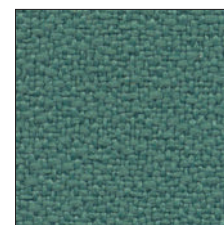
KF 6007



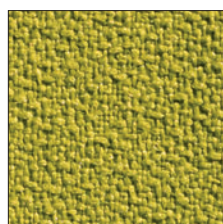
KF 6026



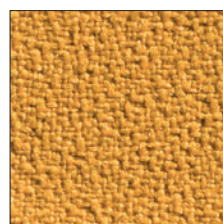
KF 7023



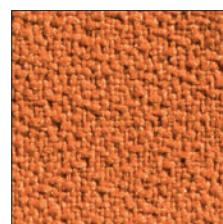
KF 7015



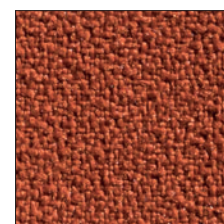
KF 3030



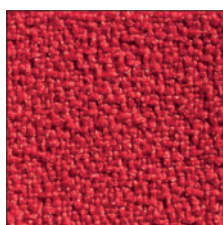
KF 3083



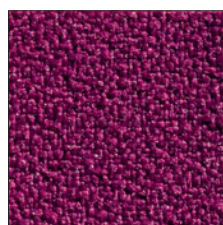
KF 4030



KF 4066



KF 4008



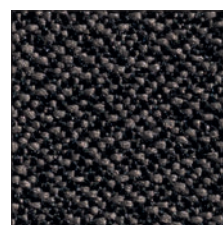
KF 4020



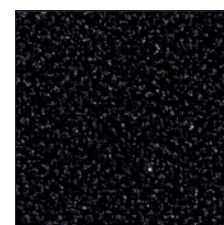
KF 8027



KF 8009



KF 9228



KF 8033

# SCHEDA TECNICA

## Technical sheet

### CATEGORIA 1

#### MADRID

± 230 g/mq

100% PP polipropilene F.R. / 100% PP polypropylene F.R.  
80.000 cicli martindale / 80.000 martindale cycles

#### **Resistenza al fuoco/Flammability**

CLASSE 1 IM - UNI 9175

EN 1021 - 1/2

BS 5852 /2 - CRIB 5

California TB 117

#### COVE

± 565 g/mq

82% PVC - 7% cotone / 11% poliestere  
82% PVC - 7% cotton / 11% polyester

50.000 cicli martindale / 50.000 martindale cycles

### CATEGORIA 2

#### ANGEL

± 228 g/mq

100% polipropilene F.R. / 100% polypropylene F.R.  
100.000 cicli martindale / 100.000 martindale cycles

#### **Resistenza al fuoco/Flammability**

CLASSE 1 IM - UNI 9175

EN 1021 - 1/2

BS 5852 /2 - CRIB 5

California TB 117

#### ONE

± 350 g/mq

100% poliestere riciclato / 100% recycled polyester  
100.000 cicli martindale / 100.000 martindale cycles

#### **Resistenza al fuoco/Flammability**

CLASSE 1 IM - UNI 9175

BS 7176

EN 1021 - 1/2

BS 5852 /2 - CRIB 5

California TB 117

#### GAZEBO

± 640 g/mq

87,5% polivinilcloruro plastificato - 12,5% cotone  
87,5% plasticized polyvinylchloride - 12,5% cotton  
50.000 cicli martindale / 50.000 martindale cycles

#### **Resistenza al fuoco/Flammability**

CLASSE 1 IM - UNI 9175

BS 7176

EN 1021-1/2

California TB 117

#### KING-FLEX

± 300 g/mq

100% poliestere Trevira CS / 100% polyester Trevira CS  
100.000 cicli martindale / 100.000 martindale cycles

#### **Resistenza al fuoco/Flammability**

CLASSE 1 IM - UNI 9175

BS 7176

EN 1021 - 1/2

BS 5852 /2 - CRIB 5

California TB 117